

Disability Support Team

Support for studying with a visual impairment

www.lboro.ac.uk/services/cds

Disabled Students Allowance

DSA is a targeted grant that can help pay for extra study related costs which may be incurred as a result of a visual impairment. We recommend all eligible students apply for DSA as soon as they are able. Please see our website and additional leaflet for further information.

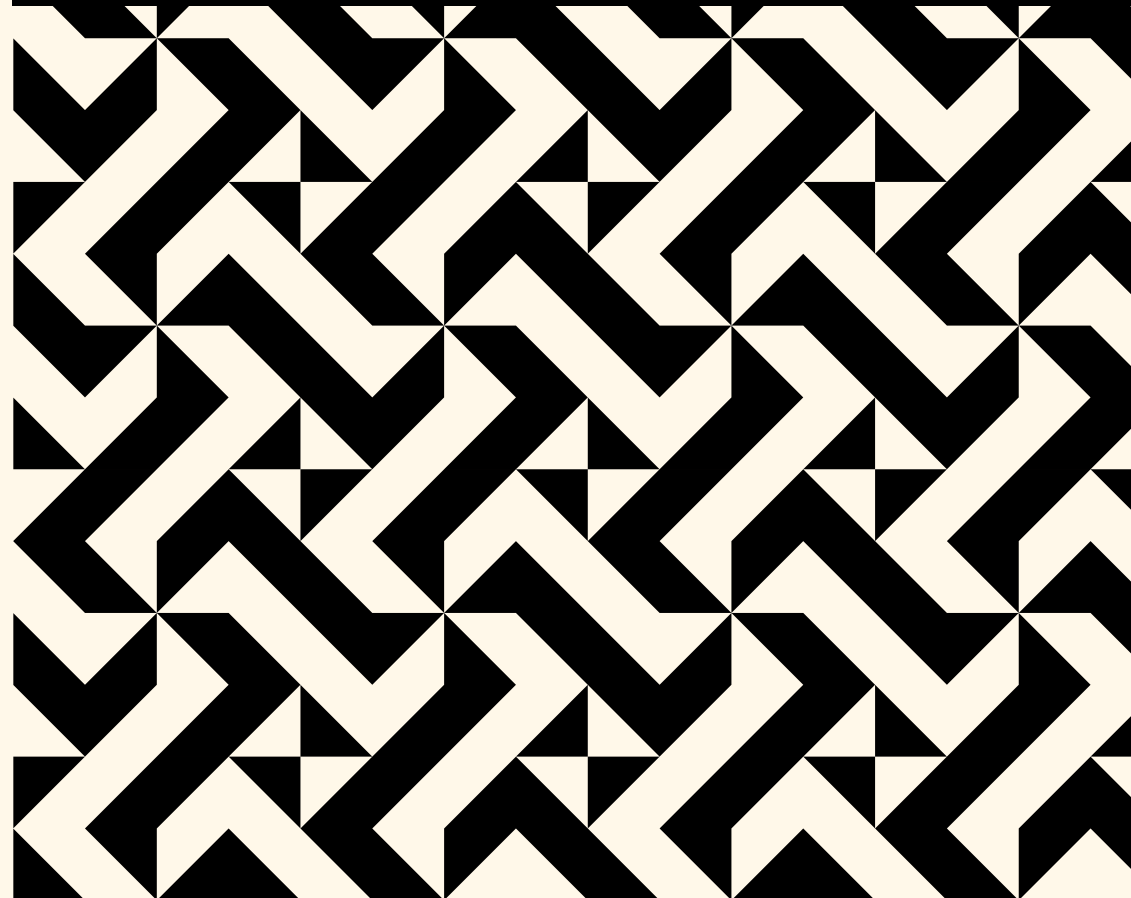
Acceptable evidence

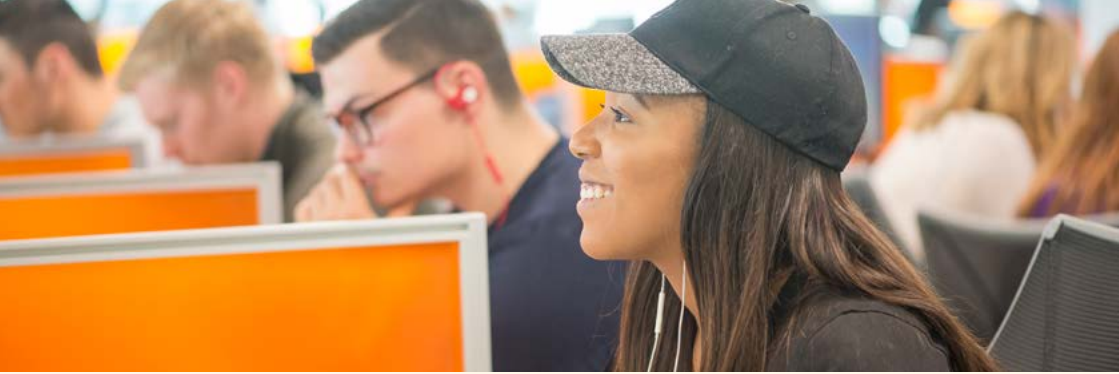
You will need to provide acceptable evidence of your visual impairment to apply for DSA and to register for support at Loughborough University. In brief, this can be a letter from your GP or medical professional confirming the date of diagnosis, an outline of the symptoms including the impact on your day to day activities and the prognosis. The full evidence policy can be found on our webpages so please refer to this for more detailed information.



Bridgeman Building
Loughborough University
Leicestershire
LE11 3TU UK

Disability Support Team
T: +44 (0)1509 222770
E: disability@lboro.ac.uk
www.lboro.ac.uk/services/cds





We recognise that choosing to go to university may involve significant life changes, and for some students this requires extra preparation and consideration. Of course, going to university is a great opportunity and we are committed to ensuring students receive the support they need to succeed.

Applicants

Regardless of whether you use the disability box in your application, or mention your circumstances in your personal statement, you should use the Disability and Health Portal to share further information with us www.lboro.ac.uk/dh-portal. This will give us the opportunity to assess your requirements and arrange support as necessary in time for your studies to start.

Current students

Current students should contact the Team directly as the Portal is for applicants only.

Before you start your studies we can:

- meet with you to discuss your individual circumstances. You are welcome to bring family or a friend to this meeting
- provide advice on the Disabled Students Allowance (DSA)
- help to secure suitable University accommodation
- arrange orientation support to help familiarise yourself with campus and feel confident about travelling independently
- advise on the medical evidence you will need to provide in order to access support.

What support could be provided during my studies?

Depending on an assessment of your specific needs, either by a DSA assessor or a disability advisor, support could include:

- arranging a 1-1 library induction
- arranging orientation support around campus
- provision of materials in accessible formats e.g. Braille
- provision of mentoring and/or study support skills
- support to facilitate access to social activities on campus
- access to some assistive software on the University IT system
- adaptations to the physical environment or provision of equipment to meet your individual needs
- providing advice on applying for and accessing your DSA
- liaising with your department about reasonable adjustments to course delivery to meet your individual needs
- arranging for extended library loans
- arranging for awareness training to your department
- examination and assessment adjustments

